

# Positive Behaviour for Learning (PBL)

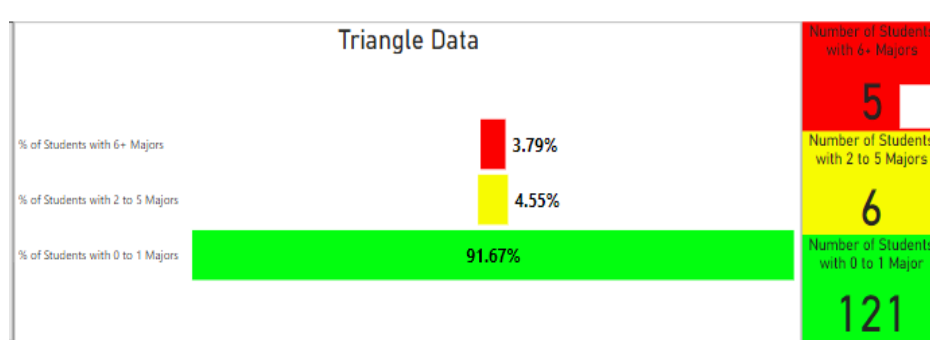
## PBL Annual Report Palmwoods State School

How are we implementing PBL Tier 1 at our school?

A Tiered Fidelity Index (TFI) is a tool used by our PBL team to identify how embedded PBL is within our school. The current annual TFI indicates that we are implementing Tier 1 with fidelity at 73%. This means we are almost meeting the benchmark for PBL's seven essential features. The benchmark is 80%. Annual surveys indicate our school is doing great job when explicitly teaching, giving feedback and acknowledging behaviour expectations, and using data to inform our decisions. Behaviour definitions and discipline policies, alongside staff professional development have been identified as priorities for improvement.

### Celebrations

We are excited as our **annual behaviour data** survey indicates we are doing well, with 91.67% of students with one major behaviour incident or less for 2024.



This year has seen the rollout of our **Palmy Points** Reward system. This process sees children receiving “Palmy Points” alongside positive, behaviour-specific feedback on individual cards. Throughout each term, students have been able to trade in their collected points for rewards. These rewards are either no-cost or low-cost, and were created with feedback from our student council. This initiative has proven to be very popular with students and has contributed to the motivation and excitement around making positive behaviour choices.



When comparing our fidelity surveys from our first year of PBL in 2023 and now in 2024, we are pleased to share **improvements** in:

- **Behavioural Expectations:** Our school's three clearly defined, positively stated behavioural expectations and our school's Positive Behaviour Expectations Matrix are explicitly taught to all students.
- **Feedback and Acknowledgement:** A formal system (i.e., written set of procedures for specific behaviour feedback that is [a] linked to school-wide expectations and [b] used across settings and

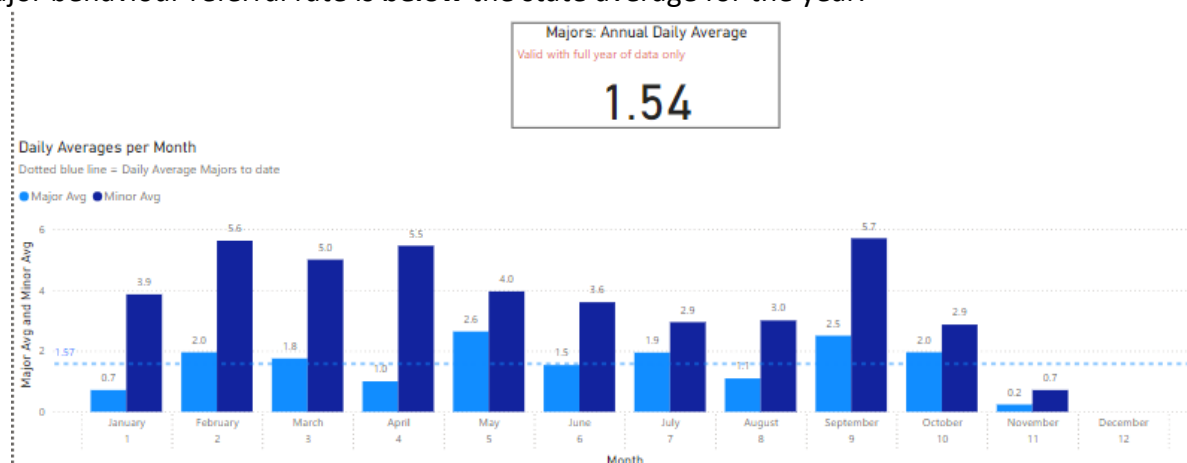


within classrooms) is in place and used by at least 90% of a sample of staff and received by at least 50% of a sample of students.

We are proud to share that in surveys conducted with students throughout the year, all students surveyed were able to tell us our school's three positive behaviour expectations: "We are safe, we are respectful, and we are learners".

What is our office referral rate?

Our major behaviour referral rate is **below** the state average for the year.



What is our attendance rate?

Our goal for attendance is 95%. This year we have undertaken the following actions to improve attendance:

- Encouraging all children to attend every day, on time, sharing class attendance data with the whole school at our fortnightly PBL assemblies.
- Including the expectation around attendance on our whole school behaviour expectation in matrix.
- Discussing attendance in leadership meetings.
- Discussing attendance data and trends in year level teams when focusing on 'at risk' students and students identified as requiring support through the school's Equity and Excellence support service.

The following table shows our attendance rates for each year level and our school average.

Year level	% Attendance rate
Prep	91.42%
1	88.21%
2	90.36%
3	90.84%
4	88.96%
5	90.84%
6	88.62%
Whole school	90.01%

How does the community view behaviour at this school?

The following table shows responses from staff, students and parents in relation to questions around behaviour in the School Opinion Survey.

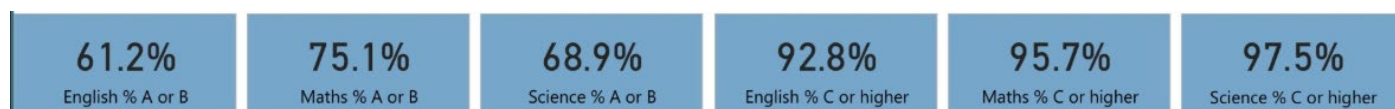
	Parent/Caregiver Agreement		Student Agreement		Staff agreement	
	Our School	QLD State Schools	Our School	QLD State Schools	Our School	QLD State Schools
Student behaviour is well managed.	90.1	80.3	84.4	63.1	87.8	74.4
The expectations and rules are clear at this school.	92.8	92.6	93.8	92.2	97.5	87.8
Respectful student relationships are fostered.	92.4	88.4	100.0	89.2	97.5	91.2
This is a good school.	95.1	90.9	96.8	79.5	100.0	91.2
<b>Concepts</b>						
Fairness/clarity of rules	91.1	86.8	86.2	76.3	91.4	85.0
Safety	93.3	89.6	93.5	84.6	93.4	89.6
School culture	95.0	89.9	93.4	80.2	98.3	89.9

When comparing our School Opinion Survey data with the region and state results, Palmwoods parents/caregivers, students, and staff agreement around perceptions of behaviour at Palmwoods State School are all higher than Queensland State Schools' agreement levels. This is something to be proud of and to celebrate!

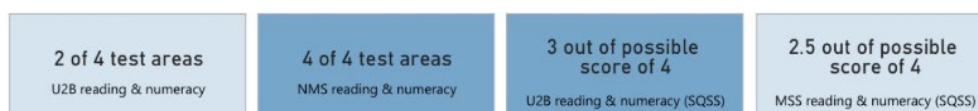
What are our academic outcomes?

Below is data showing our Semester 1 results for English, Mathematics and Science, some of our NAPLAN data, and our Semester 2 results for English and Maths.

**Semester 1 A-E Data:**



**NAPLAN Data:**



N.B. U2B = Upper Two Bands; NMS = National Minimum Standard; MSS = Mean Scale Score; SQSS = Similar QLD State Schools

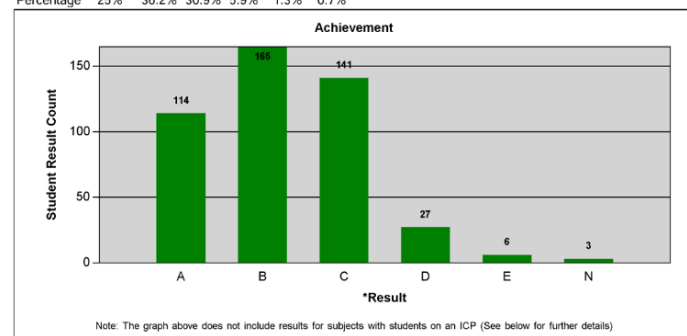
**Semester 2 A-E Data:**

Subject: ENGLISH

Number of students: 457

**Achievement Breakdown**

Rating	A	B	C	D	E	N
Percentage	25%	36.2%	30.9%	5.9%	1.3%	0.7%

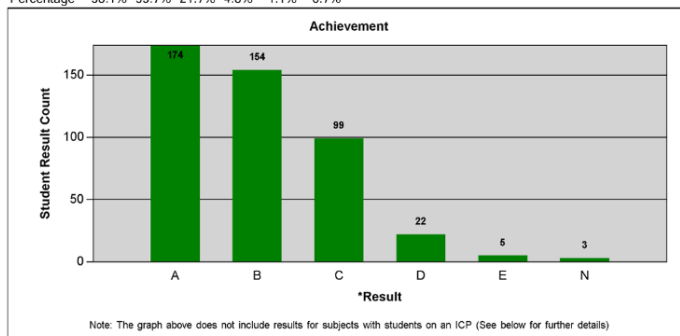


Subject: MATHEMATICS

Number of students: 457

**Achievement Breakdown**

Rating	A	B	C	D	E	N
Percentage	38.1%	33.7%	21.7%	4.8%	1.1%	0.7%



What is our action plan for the next school year?

After reviewing our data, we have identified the following goals for next year:

1. **Goal identified from Effective Behaviour Support Survey:** *Strengthen our school-wide, consistent implementation of the PBL Behaviour Matrix language, behaviour expectations and responses to behaviour.*
2. **Goal identified from our OneSchool Behaviour Data:** *Focus on developing and reinforcing positive, respectful learning behaviours, to address current OneSchool data trends and develop “The Palmy Way” among our students.*
3. **Goal identified from Tiered Fidelity Index: Student/Family/Community Involvement.** *Strengthen connections, engagement and involvement (e.g., providing input on universal foundations like expectations, consequences, acknowledgements) around PBL with the Palmwoods State School community.*

We value your input

If you have any feedback or ideas about how to improve PBL implementation at our school, please contact Bec Hutton [rhutt4@eq.edu.au](mailto:rhutt4@eq.edu.au) or Rebecca Clough [rosul27@eq.edu.au](mailto:rosul27@eq.edu.au), email our school at [adminpalmwoods@palmwoodsss.eq.edu.au](mailto:adminpalmwoods@palmwoodsss.eq.edu.au), or phone on 5453 2444.

We welcome new team members and working group participants! Please let us know if you have any skills you can share with us.